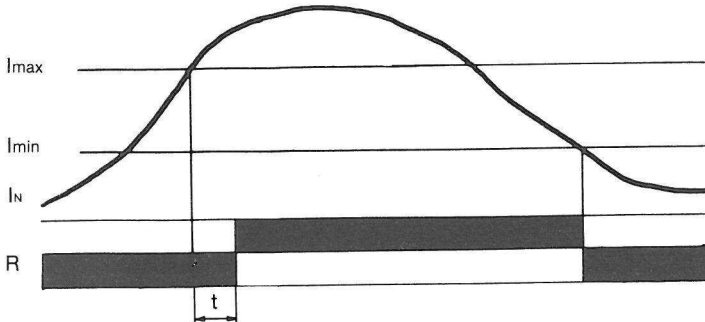


Electronic Current Sensing Relay *IAC-H* (hysteresis)

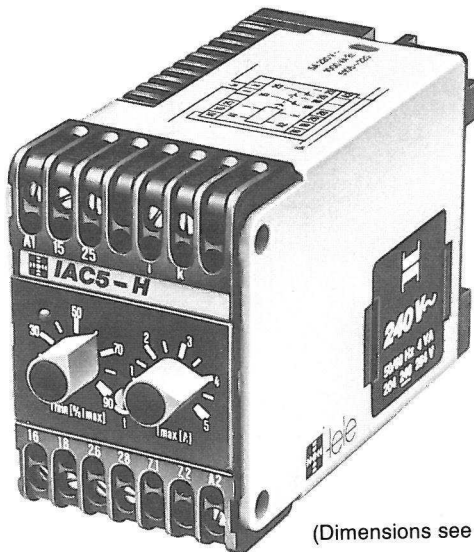
- For a.c. only
- Adjustable time delay 0.5 to 5 s
- Galvanical separation of measuring circuit and auxiliary voltage
- Double-pole change over
- LED indication



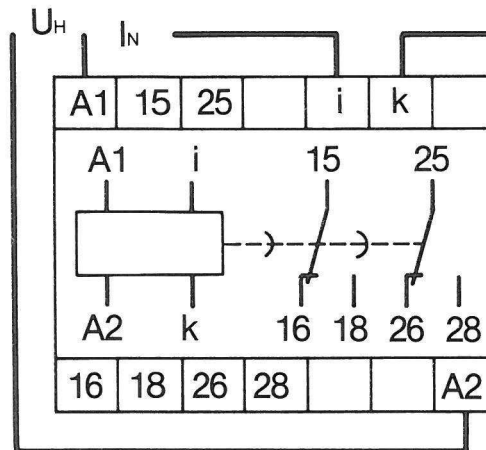
The electronic current sensing relay *IAC-H* can sense electronic currents up to 5 A. For higher currents an external current transformer may be used. The threshold values I_{max} and I_{min} can be adjusted by two potentiometers. If the current to be controlled exceeds I_{max} the **output relay R** energises after time delay „t”, and de-energises immediately the current falls back below I_{min} . The LED indicates that the relay is energised.

Measuring ranges:
 I_{max} : 0.1 — 1 A ... Type IAC 1-H
 I_{max} : 0.5 — 5 A ... Type IAC 5-H
 I_{min} : 10 — 90% of I_{max}
 Input resistance: 5m Ω
 Frequency range: 48 ... 63 Hz
 Permanent over current max. 15 A (I-k)

Accuracy:
 Repeat accuracy at constant conditions (% of full range) 1%
 Voltage effect in range of 0.85 - 1.1 U_H 0.5%
 Temperature effect 0.1%/°C



(Dimensions see page A1)



Technical data:

Auxiliary voltages:

24, 42, 48, 110, 127, 220, 240, 380 V a.c.
 24, 36, 42, 48 V a.c./d.c.
 6, 12, 60, 110 V d.c. (max. rem. ripple factor 10%)

Nominal power consumption:

24 ... 380 V a.c./4 VA
 24 V a.c./d.c./2 VA, 36 V a.c./d.c./3 VA,
 42 V a.c./d.c. 3.5 VA, 48 V a.c./d.c./4 VA
 6 ... 110 V d.c./2 W

Acceptable voltage variation 0.85 - 1.1 U_H

Frequency range 48 ... 63 Hz

Duty cycle 100%, IEC class 1c

Environmental conditions:

Ambient temperature range
 -20°C to +55°C
 Climate resistance F according to DIN 40040

Mechanical data/classifications:

Housing with plug-in power supply, self-quenching plastic material, protection class IP 40.

Connections:

Series k,f: Terminals shrouded to prevent human contact, max. 4 mm²

For standards and measurements, comp. tabulation of housings: see catalogue series k-s-f

Weight appr. 280 g

Classifications:

VDE 0435: dielectric strength 2000 V a.c.
 VDE 0110: group C 250 V a.c.
 IEC-specifications 255-2

Output:

Contact double pole change over
 Contact voltage 380 V a.c. 250 V d.c.
 Permanent current max. 5 A
 Contact rating: 220 V a.c. cos φ 1 1250 VA
 Electrical life 220 V a.c. 5 A resist load approx. 3.10⁵ operations
 Mechanical life 30.10⁵ operations
 Contact material AgCdO